

ANALYSIS OF POSTREFLUX SWALLOW-INDUCED PERISTALTIC WAVE INDEX IS CONSIDER AS A METHOD FOR EVALUATING THE EFFECTIVENESS OF ESOPHAGEAL CLEARANCE AND THE CRITERION FOR PHENOTYPING OF GASTROESOPHAGEAL REFLUX DISEASE

COHORT



- GERD patients (N=60)

NERD
(N=30)

ERD
(N=30)

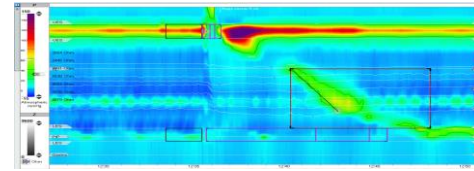
Mean age: 44,7 years

- Healthy volunteers (N=20)

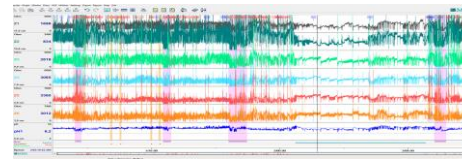
Mean age: 45,2 years

<https://doi.org/10.1111/nmo.13671>

OUTCOMES



- high-resolution manometry (HRM) : distal contractile integral, peristaltic break



- pH-impedance metry: PSPW index

PSPW index



DCI



Peristaltic break

Evaluation of the effectiveness of esophageal clearance ?



PSPW index is an additional criterion for phenotyping of GERD?

RESULTS

Significant associations $p < 0.01$

↑ GERD ↔ ↓ PSPW index

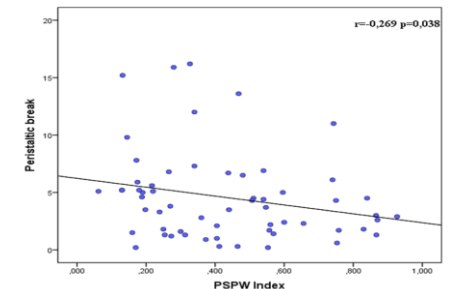
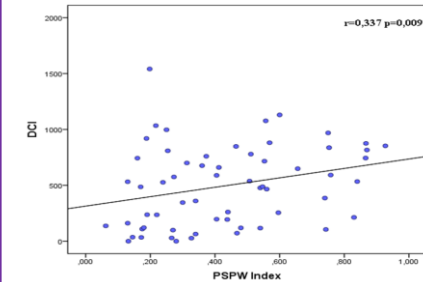
PSPW index — DCI

PSPW index — Peristaltic break

GERD patients

PSPW index — DCI

NERD patients



Anastasiia Makushina makushinanast@gmail.com